

Software update MENNEKES ACU (device version v3 and v4)

You can download the software update from our website under “Service”:

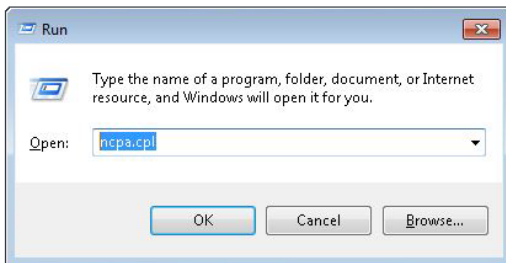
<https://www.chargeupyourday.com/service/software-updates/softwareupdate-acu-v3-and-v4/>

1. Preparation:

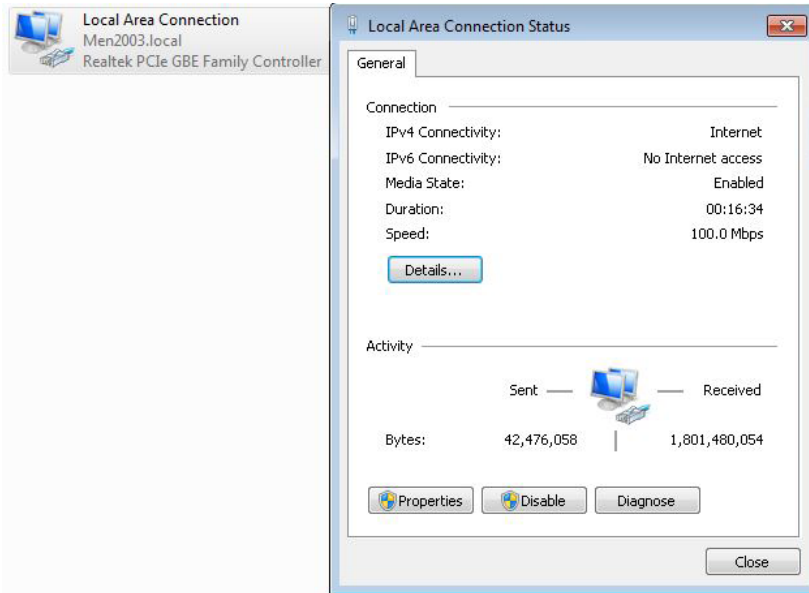


To install the update, you need a PC on which you have permission to change the network settings (e.g. IP address). Operation may vary depending on the operating system used (Windows 7 is used in this example).

- ▶ Right-click on the Windows icon on the bottom left.
- ▶ In the context menu, select “Run”.
- ▶ In the window that now appears, enter “ncpa.cpl” and confirm with “OK”.



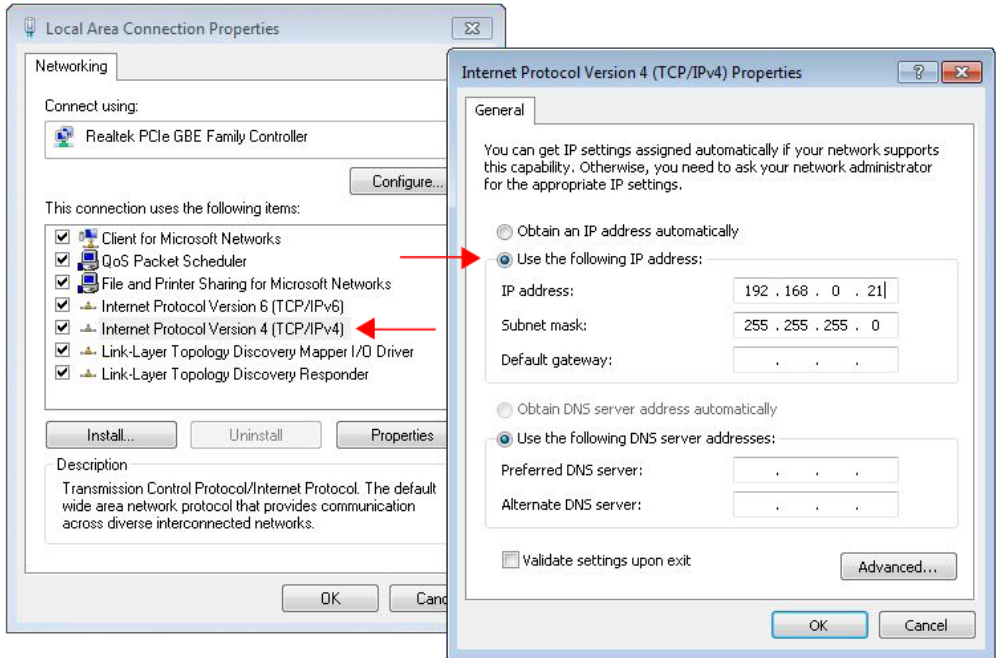
- ▶ Now open the settings for the Ethernet connection with a double-click.



- ▶ Click on "Properties".
- ▶ Call up "Internet Protocol Version 4" with a double-click.

► Select “Use the following IP address” and enter the following data:

- IP address “192.168.0.21”
- Subnet mask “255.255.255.0”



► Confirm the settings by clicking “OK” and exit the menu.

2. Uploading the software update

To upload the software update, connect the prepared PC to the ACU of the charging station or the eMobility Gateway.



The connection is made by means of a network cable.

For this, **either use the Ethernet port directly on the ACU** (see Fig. 2 and Fig. 3) or the **Ethernet socket (RJ45)** located in the charging column **to the right of the meters** (see Fig. 1).



Fig. 1: Ethernet socket (RJ45)



Fig. 2: Ethernet port "ETH0" on the ACU v4



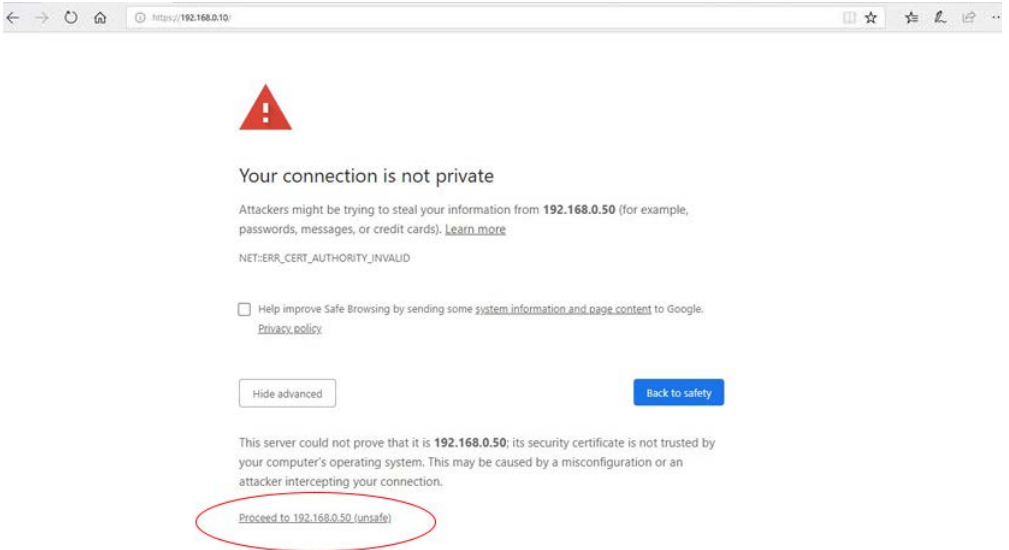
Fig. 3: Ethernet port on the ACU v3

Opening the service interface:

- ▶ Once you are connected accordingly, open a leading-edge Internet browser (recommendation: Google Chrome or Mozilla Firefox).
- ▶ In the address field, enter "192.168.0.10" and confirm with ENTER.

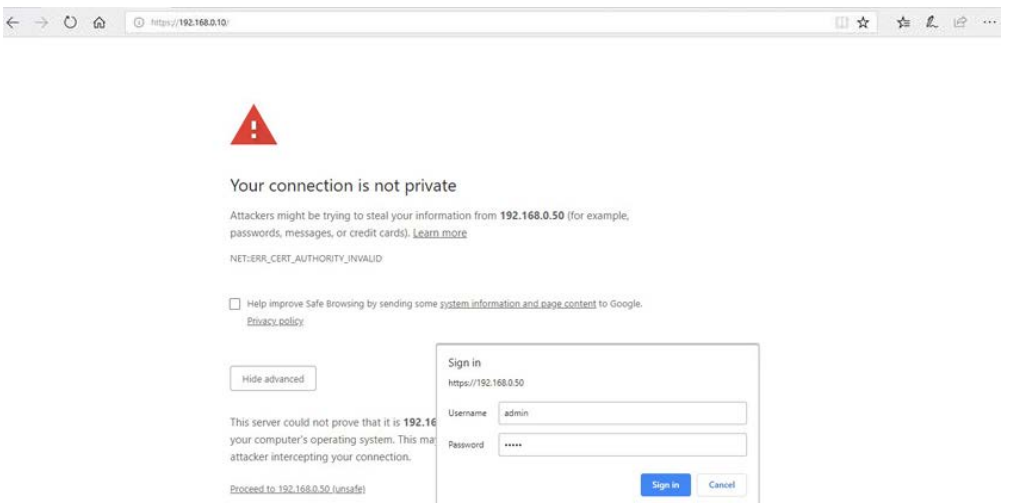


A page that indicates an insecure connection may now open. In Google Chrome, you can skip this to get to the service interface. To do this, click on "Advanced" followed by "Proceed to xx.xx.xx.xx".



The service interface of the ACU now opens.

- ▶ Enter the username and password.
 - User name: “admin”
 - Password: “admin”



SCU administration:

- ▶ On the start page of the service interface, navigate to “Setup” on the top right.
- ▶ Then navigate to “SCU Setup” on the top left.
- ▶ In the menu “SCU Administration”, you will now find a tabular listing of all SCUs connected to the ACU.
- ▶ Now adjust the configuration of all SCUs via the “Setup” menu.

SCU - Administration

ID:	Name:	Conn:	Status:	Error:	Min-/ Max. Curr.:	LB-Curr.:	LB-Forecast:	Meter-Count:	Setup:
99	99	1	Idle	A:- B:-	16A	---	---	0	Setup
187	187	2	Idle	A:- B:-	32A	---	---	2	Setup
total:			free:	2/2	48A				

Search by ID

SCU setup:

- ▶ In all SCU configurations, “SCU Meter Enable” must be disabled (no tick).
- ▶ Click on “Apply” to save the configuration.
- ▶ Follow these steps for each connected SCU.

Main Page ACU-Setup **SCU-Setup** Transactions SysLog AmtronLog

Settings **Test**

ID: 187	Name: 187
Serial: 3758313631351006000800	Max Current: 32.0
Status: Idle	Fuse(Max Current): 32.0
Meter address: 2352531	SCU Meter Enable: <input type="checkbox"/>
Meter type: IEC61107	OCPP ConnID: 2
Meter reading: 2.37	SMSTel: <input type="text"/>
Hardware-Ver.: 0	CPID: <input type="text"/>
Firmware-Ver.: 0-1032	Reader Typ: Elatec Multi ISO
Error code A: -	Local Auth UID: <input type="text"/>
Error code B: -	SCU Flow: Standard
Power Path: None	Autoselect Energy Path: Combined Path(default)
CP State: A	SCU Panel: LCD Panel
PP State: Open	Language: German(de)
Contactor State: Open	Legacy UID: <input type="checkbox"/>
	Emergency Charge: <input type="checkbox"/>
	SCU Unavailable: <input type="checkbox"/>
	Display Charge Info: Charged Energy

Once the meter has been disabled for all SCUs as described above, a software update can be started.

- ▶ To do this, enter the following address in the address field of the browser:

https://192.168.0.10/admin/admin_local_acu_upgrade

ACU-Firmware

Datei: No file chosen

URL:

- ▶ Select the previously downloaded file with "Choose File".
- ▶ Start the update by clicking on "starten".



The update can sometimes take up to 30 minutes for two taught SCUs as both the ACU and the taught SCU are updated to the new software version.

Reactivate meters:

Once the software update has been completed, the meters of the SCU must be reactivated.

- ▶ Open the service interface of the ACU as described on page 6 and navigate to "SCU Administration">"SCU Setup".
- ▶ Now reactivate the meter under "SCU Meter Enable" (set tick).
- ▶ Click on "Apply" to save the configuration.
- ▶ Follow these steps for each connected SCU.